



GIA

GEMOLOGICAL INSTITUTE OF AMERICA®

New York Laboratory Headquarters
580 Fifth Avenue | New York, NY 10036-4794
T: 212-221-5858 | F: 212-575-3095

Carlsbad
5355 Armada Drive | Carlsbad, CA 92008-4699
T: 760-603-4500 | F: 760-603-1814
www.gia.edu

COLORED DIAMOND GRADING REPORT

April 5, 2006

Shape and Cutting Style **Round-Cornered**

Rectangular Brilliant

Measurements 11.01 x 9.78 x 6.56 mm

GRADING RESULTS

Carat Weight **6.60 carat**

Color

Origin **NATURAL**

Grade **FANCY**

BROWNISH YELLOW

Distribution **Even**

Clarity Grade **S12**

ADDITIONAL GRADING INFORMATION

Finish

Polish **Good**

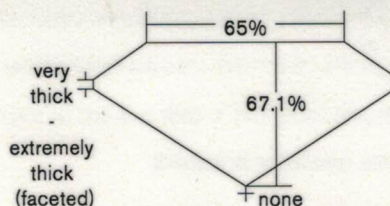
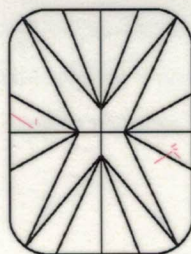
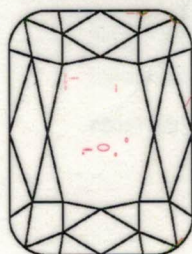
Symmetry **Good**

Fluorescence **Faint**

Comments:

Additional clouds, internal graining and surface graining are not shown.

REFERENCE DIAGRAM



Profile not to actual proportions.

KEY TO SYMBOLS

Feather

Cloud

Crystal

Indented Natural

Natural

Red symbols denote internal characteristics (inclusions). Green or black symbols denote external characteristics (blemishes). Diagram is an approximate representation of the diamond, and symbols shown indicate type, position, and approximate size of clarity characteristics. All clarity characteristics may not be shown. Details of finish are not shown.

GIA CLARITY SCALE

FLAWLESS
INTERNALLY
FLAWLESS

VVS₁

VVS₂

VS₁

VS₂

S1₁

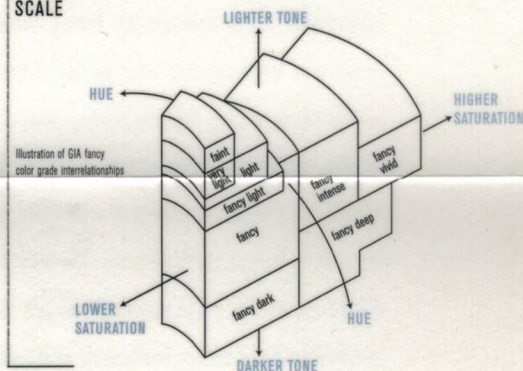
S1₂

I₁

I₂

I₃

GIA COLORED DIAMOND SCALE



224662501

This Report is not a guarantee, valuation or appraisal and contains only the characteristics of the diamond described herein after it has been graded, tested, examined and analyzed by the GIA Laboratory and/or has been inscribed using the techniques and equipment used by the GIA Laboratory at the time of the examination and/or inscription. The recipient of this Report may wish to consult a credentialed jeweler or gemologist about the information contained herein.



The security features in this document, including the hologram, security screen and microprint lines, in addition to those not listed, exceed document security industry guidelines.

IMPORTANT LIMITATIONS ON BACK

©2006 GEMOLOGICAL INSTITUTE OF AMERICA, INC.