

ARGYLE PINK™

DIAMONDS

Gem Analysis Report

ORIGIN ANALYSIS: THE PHYSICAL AND SPECTROSCOPIC CHARACTERISTICS OF THIS DIAMOND HAVE BEEN ASSESSED AS CORRESPONDING TO THOSE FOUND IN DIAMONDS FROM THE ARGYLE DIAMOND MINE IN WESTERN AUSTRALIA.

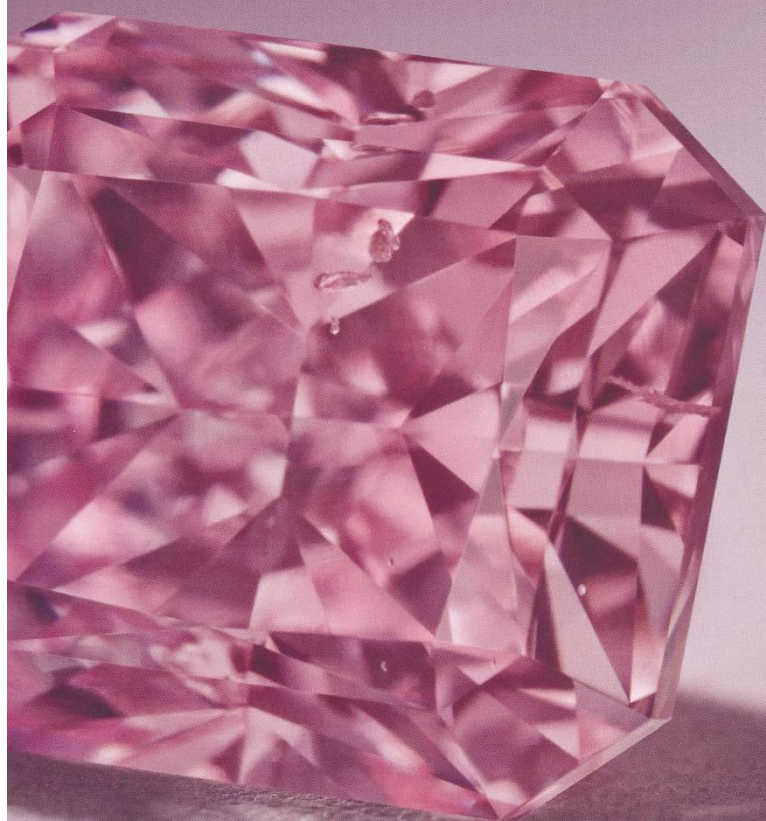
| | |
|--------------|---------------|
| ID No. | AO 464595 |
| CARAT WEIGHT | 0.50ct |
| SHAPE | Modified Oval |
| CLARITY | SI2 |
| COLOUR | Red |
| DATE | 5 March 2024 |



The above diamond has been graded for colour and clarity by Argyle Diamonds Limited in accordance with its proprietary grading system. Physical and spectroscopic analysis was performed by Gemlab (Belgium) BV, based on current scientific knowledge and proprietary techniques, to confirm the presence of characteristics indicative of the stated origin. Tests performed include Raman/photoluminescence spectroscopy, UV-Vis-NIR spectroscopy, FTIR spectroscopy, DFI fluorescence analysis, and microscopic analysis.

www.argylepinkdiamonds.com

THIS DOCUMENT IS NOT A GUARANTEE OR VALUATION. IT ASSESSES KEY CHARACTERISTICS OF YOUR DIAMOND UTILISING THE TECHNIQUES AND EQUIPMENT AVAILABLE AT THE TIME OF ASSESSMENT. PLEASE SEE THE WEBSITE FOR CONDITIONS APPLICABLE TO THIS REPORT. ARGYLE DIAMONDS LIMITED, LEVEL 18, 152 - 158 GEORGES TERRACE, PERTH 6000, WESTERN AUSTRALIA.



The ancient story of Argyle Pink Diamonds™ began in the heart of Western Australia's remote East Kimberley region, where a treasure lay hidden for over a billion years. The discovery of a single diamond, glinting in an anthill, changed the course of history.

For more than three decades, the Argyle Diamond Mine produced diamonds with a depth, range and intensity of colour, never seen before or since. Coveted for their astounding rarity, with a rich palette ranging from pale blush through to vivid pink, cornflower blue, potent violet and sumptuous red, Argyle Diamonds™ continue to captivate the most discerning collectors and connoisseurs.

Although the Argyle Diamond Mine was the world's virtual sole source of pink diamonds, accounting for more than 90% of global supply - astonishingly, less than one percent of the mine's production was pink.